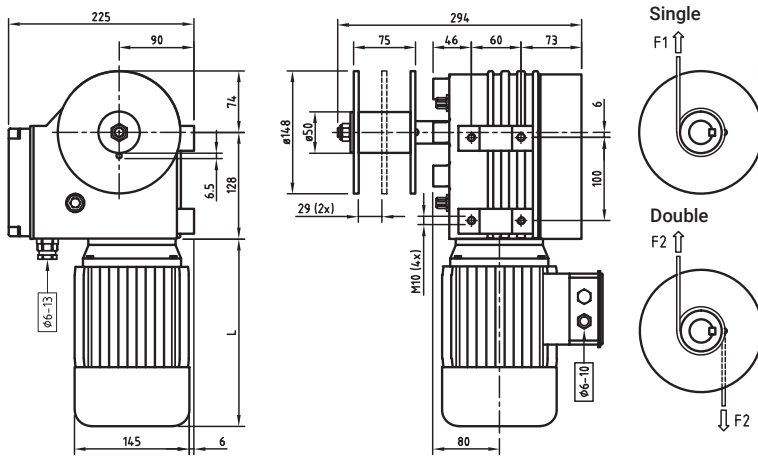


MR3 | Three phase motor-gear

DETAILS

- It can rise directly up to 500 Kg and 1000 kg with hoist.
- The potentiometer indicates the position of the window.
- It has two limit-switches.



Description	230/400 Volt • 3 ~ • 50 Hz						Drum or reel		
	T [Nm]	n [rpm]	P [kW]	I [A]	L [mm]	m [kg]	D [mm]	Type of force	Max. gross load [N]
MR3, 400V, 3 ~, Ø50 single drum	200	2.6	0.18	1.2/0.7	191	25	50		4000 = F1
MR3, 400V, 3 ~, Ø50 double drum	200	2.6	0.18	1.2/0.7	191	25	50		5800 = 2x F2 (2x 2900)